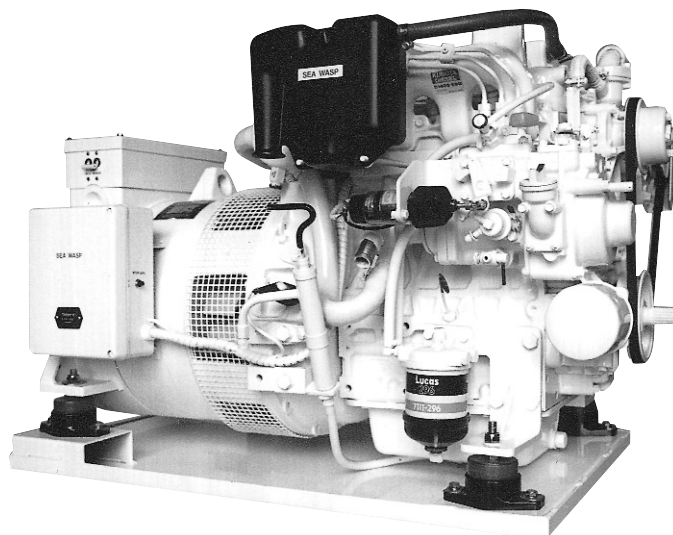


Generating power with pleasure

# SEA WASP



*Proudly built in  
Australia*



## 12 K.V.A. Model SW. 9600

### Electrical Output

12 K.V.A. (9.6K.W. @ 0.8 Power Factor).

### Speed

1500 R.P.M. - 50HZ (1800 R.P.M. - 60HZ).

### Voltage Connections

(1) Single (1) Phase, 240 Volt - 50HZ.

(2) Three (3) Phase, 415/240 Volt - 50HZ.

(3) Other voltages and frequencies available.

### Generator Design

Brushless, Drip Proof Construction, 4 Pole Revolving Field,  
Class 'F' Insulation.

### Build Specifications.

C.E.I. 2-3, I.E.C. 34.1, U.D.E. 0530, BS 4999.

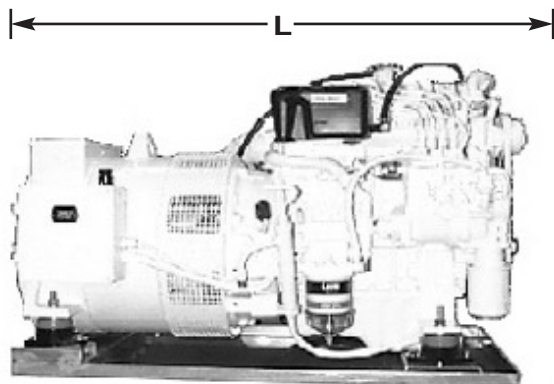
<b>Generator Output</b>	12 K.V.A. (9.6K.W.)	<b>H.P.(MAX)</b>	16.8 H.P. @25°C
<b>Generator Model</b>	19 K.V.A. Brushless	<b>Governing</b>	Mechanical Flyweight
<b>Engine Model</b>	Kubota V1505 B.G.2.	<b>Cooling System</b>	Fresh Water Heat Exchanged
<b>Engine Type</b>	Water Cooled 4 Cycle Diesel	<b>Starting System</b>	Electrical 12V 1.2 K.W.
<b>No. of Cylinders</b>	Four (4)	<b>Battery Charging</b>	12V, 360W
<b>Bore and Stroke</b>	78x78.4mm	<b>Lub. Oil Capacity</b>	6.0L
<b>Total Displacement</b>	1498 C.C.	<b>Fuel Consumption</b>	2.54 Litres/H @ Full Load
<b>Full Load Speed</b>	1500 R.P.M.		
<b>Fuel Injection Pump</b>	Bosch P.F.R. M.D. Pump		
<b>Operating Angle</b>	20° in any direction (cont.)		

## standard features

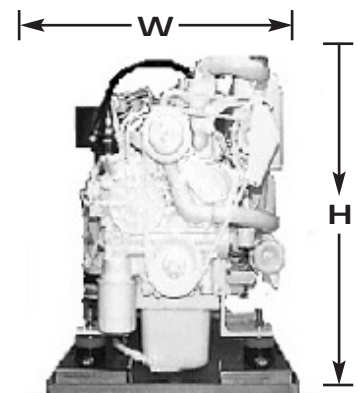
- 1 Fresh water cooled, Diesel engine.
- 2 Fresh water cooled manifold.
- 3 Wet exhaust (standard).
- 4 Dry exhaust (in lieu of wet).
- 5 2.5mm stainless steel tray base,
- 6 Anti-vibration mounts (4) fitted.
- 7 12 volt battery charging alternator.
- 8 12 volt D.C. control circuit breaker.
- 9 A.C. load circuit breaker.
- 10 Sump oil pump fitted.
- 11 Engine hours run meter.
- 12 Fuel filter (water separator).
- 13 Fuel lift pump (60cms lift).
- 14 High water temperature shutdown.
- 15 Low engine oil pressure shutdown.
- 16 High exhaust temperature shutdown.
- 17 Remote mounting starting module (standard).
- 18 All connections outside sound shield.

## optional equipment

- 1 Below waterline anti-syphon installation kit.
- 2 Water lock muffler.
- 3 12 volt D.C. electric fuel pump.



Open Model



Silenced Model

## Dimensions 1 - 3 phase

Model	Length	Width	Height	Weight
SW9600	L (mm)	W (mm)	H (mm)	Kg (wet)
Open Set	1100	570	680	348
Silenced Set	1140	640	715	398

Distributed by:

Manufactured by:

**Sea Wasp Australia**

PO Box 863, Wynnum Qld 4178  
 Phone: (07) 3907 0708 Fax: (07) 3907 0709  
[www.seawasp.com.au](http://www.seawasp.com.au)