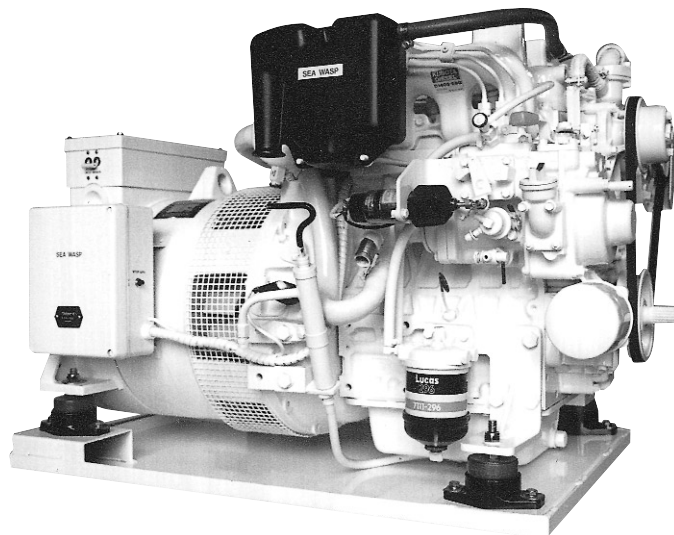


Generating power with pleasure

# SEA WASP



*Proudly built in  
Australia*



## 9.0 K.V.A. Model SW. 7200

### Electrical Output

9.0 K.V.A. (7.2K.W. @ 0.8 Power Factor).

### Speed

1500 R.P.M. - 50Hz (1800 R.P.M. - 60Hz).

### Voltage Connections

- (1) Single (1) Phase, 240 Volt - 50Hz.
- (2) Three (3) Phase, 415/240 Volt - 50Hz.
- (3) Other voltages and frequencies available.

### Generator Design

Brushless, drip proof construction, Four pole revolving field, class 'F' Insulation.

### Build Specifications

C.E.I. 2-3, I.E.C. 34.1, U.D.E. 0530, BS 4999.

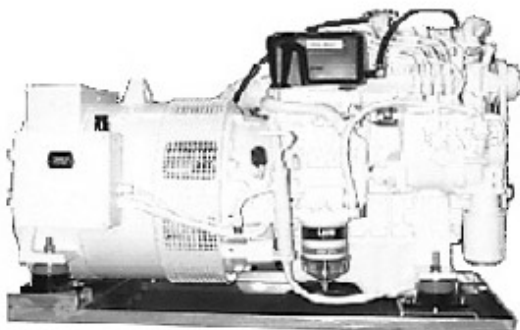
<b>Generator Output</b>	9.0 K.V.A. (7.2K.W.)	<b>H.P.(MAX)</b>	12.8 H.P. @25°C
<b>Generator Model</b>	9.0 K.V.A. Brushless	<b>Governing</b>	Mechanical Flyweight
<b>Engine Model</b>	Kubota D1105 E.B.G.2.	<b>Cooling System</b>	Fresh Water Heat Exchanged
<b>Engine Type</b>	Water Cooled 4 Cycle Diesel	<b>Starting System</b>	Electrical 12V 1.0 K.W.
<b>No. of Cylinders</b>	Three (3)	<b>Battery Charging</b>	12VOLT 360Watt
<b>Bore and Stroke</b>	78 x 78.4mm	<b>Lub. Oil Capacity</b>	5.1Litres
<b>Total Displacement</b>	1198 C.C.	<b>Fuel Consumption</b>	2.4 Litres/H @ Full Load
<b>Full Load Speed</b>	1500 R.P.M.	<b>Noise Levels (Open)</b>	73 dBA @ 5 metres
<b>Fuel Injection Pump</b>	Bosch P.F.R. M.D. Pump	<b>Noise Levels (Silenced)</b>	61 dBA @ 5 metres
<b>Operating Angle</b>	20°C in any direction (cont.)		

## standard features

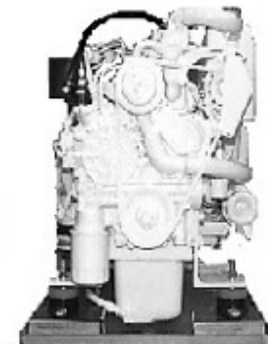
- 1 Fresh water cooled, Diesel engine.
- 2 Fresh water cooled manifold.
- 3 Wet exhaust (standard).
- 4 Dry exhaust (in lieu of wet).
- 5 3mm thick zinc steel tray base,
- 6 Anti-vibration mounts (4) fitted.
- 7 12 volt battery charging alternator.
- 8 12 volt D.C. control circuit breaker.
- 9 A.C. load circuit breaker.
- 10 Sump oil pump fitted.
- 11 Engine hours run meter.
- 12 Fuel filter (water separator).
- 13 Fuel lift pump (60cms lift).
- 14 High water temperature shutdown.
- 15 Low engine oil pressure shutdown.
- 16 High exhaust temperature shutdown.
- 17 Remote mounting starting module (standard).
- 18 Silenced models supplied with remote and local starting modules.
- 19 All connections outside sound shield.

## optional equipment

- 1 Below waterline anti-syphon installation kit.
- 2 Water lock muffler.
- 3 12 volt D.C. electric fuel pump.
- 4 240 volt bulkhead mounting switchboard with ship-shore change over switch, voltmeter, ammeter, frequency meter, two-pole main circuit breaker, five (5) two-pole individual load circuit breakers.



Open Model



Silenced Model

## Dimensions - 1-3 phase

Model	Length L (mm)	Width W (mm)	Height H (mm)	Weight Kg (wet)
SW7200 (9 K.V.A.)				
Open Model	955	550	658	237
Silenced Model	1060	600	685	264

Distributed by:

Manufactured by:

**Sea Wasp Australia**

PO Box 863, Wynnum Qld 4178  
Phone: (07) 3907 0708 Fax: (07) 3907 0709  
[www.seawasp.com.au](http://www.seawasp.com.au)