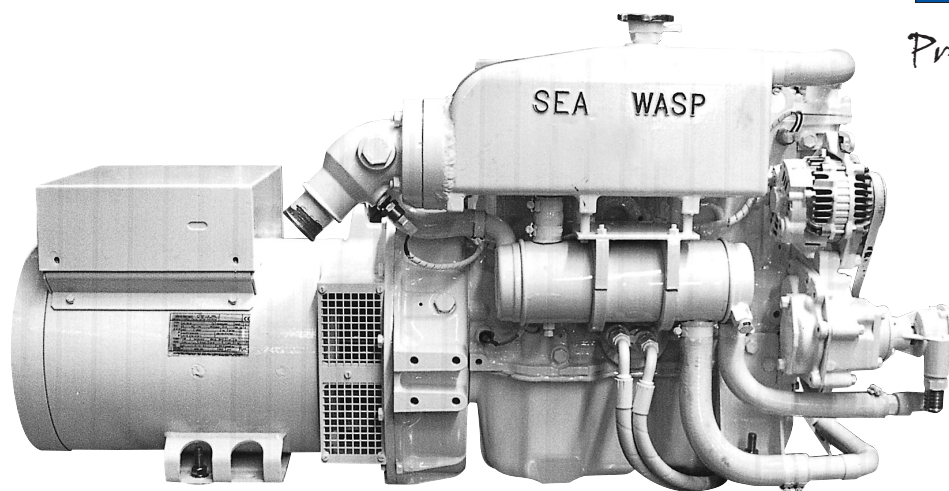


Generating power with pleasure

SEA WASP



*Proudly built in
Australia*



45 K.V.A. Model SW. 36000

Electrical Output

45.0 K.V.A. (36.0K.W. @ 0.8 Power Factor).

Speed

1500 R.P.M. - 50Hz (1800 R.P.M. - 60Hz).

Voltage Connections

(1) Single (1) Phase, 240 Volt - 50Hz.

(2) Three (3) Phase, 415/240 Volt - 50Hz.

(3) Other voltages and frequencies available.

Generator Design

Brushless, drip proof construction, 4 pole revolving field, class 'F' Insulation.

Build Specifications.

C.E.I. 2-3, I.E.C. 34.1, U.D.E. 0530, BS 4999.

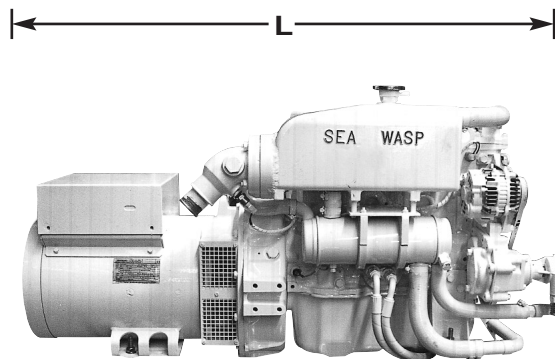
Generator Output	45.0 K.V.A. (36.0 K.W.)	H.P.(MAX)	56.5 H.P. @25°C
Generator Model	50.0 K.V.A. Brushless	Governing	Mechanical Flyweight
Engine Model	Mitsubishi S4K	Cooling System	Fresh Water Heat Exchanged
Engine Type	Water Cooled 4 Cycle Diesel	Fuel Consumption	10.5 Litres/H @ Full Load
No. of Cylinders	Four (4)	Induction	Normally Aspirated
Bore and Stroke	102 x 130mm		
Total Displacement	4249 C.C.		
Full Load Speed	1500 R.P.M.		
Fuel Injection Pump	Bosch Inline		
Operating Angle	20°C in any direction (cont.)		

standard features

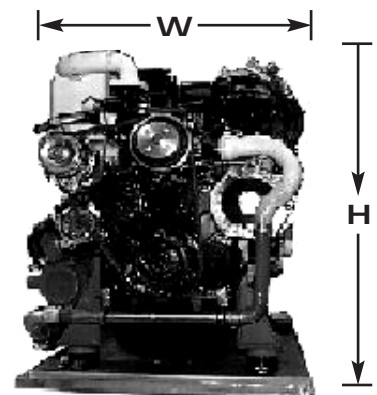
- 1 Fresh water cooled, Diesel engine.
- 2 Wet exhaust (standard).
- 3 Anti-vibration mounts (4) fitted.
- 4 12 volt battery charging alternator.
- 5 12 volt D.C. control circuit breaker.
- 6 Sump oil pump fitted.
- 7 Engine hours run meter.
- 8 Fuel filter.
- 9 Fuel lift pump (60cms lift).
- 10 High water temperature shutdown.
- 11 Low engine oil pressure shutdown.

optional equipment

- 1 Below waterline anti-syphon installation kit.
- 2 Water lock muffler.
- 3 12 volt D.C. electric fuel pump.



Open Model



Silenced Model

Dimensions

Model	Length L (mm)	Width W (mm)	Height H (mm)	Weight Kg (wet)
SW36000				
Open Model	1700	750	950	690

Distributed by:

Manufactured by:

Sea Wasp Australia

PO Box 863, Wynnum Qld 4178
 Phone: (07) 3907 0708 Fax: (07) 3907 0709
www.seawasp.com.au